



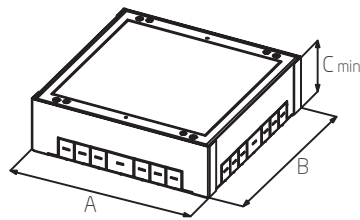
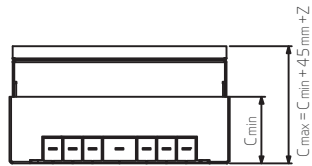
Underfloor cabeling system

Sistem podnog razvoda



1.0. Podne kutije Floor junction boxes

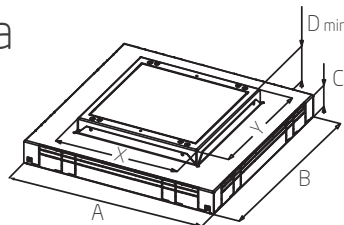
1.1. Ugradna kućišta Floor box bases



			A [mm]	B [mm]	C _{min} [mm]
Ugradno kućište podne kutije Advance Advance floor box base	4M	MFA11	208,5	182	83
	7M	MFA13	273	182,5	83
	2x7M	MFA14	273	269,5	83
	3x7M	MFA15*	273	351,5	83
	4x7M	MFA19	273	521	83

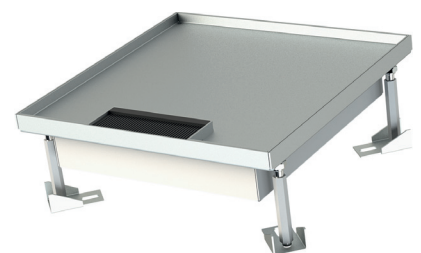
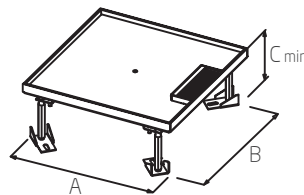
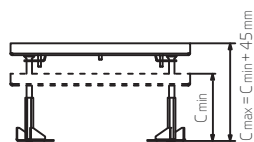
* horizontalno / horizontal

1.2. Prolazna ugradna kućišta Floor box junction bases



			A [mm]	B [mm]	C [mm]	D _{min} [mm]	X [mm]	Y [mm]
Prolazno ugradno kućište podne kutije Advance Floor box junction base Advance	2x7M	MFA20	420	420	51	83	265	265

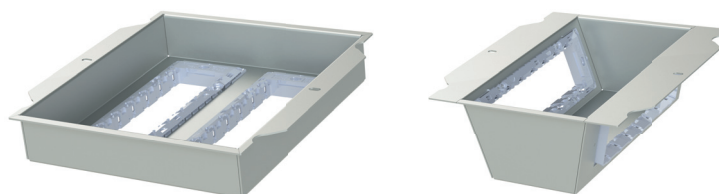
1.3. Podne kutije za duple podove Double floors floor boxes



			izlaz za kabele / cable slot			A [mm]	B [mm]	C _{min} [mm]
			bez / without	jedan / single	dva / two			
Podna kutija s poklopcem Advance za duple podove Advance floor box base with cover for double floors	4M	MFA11S17Z	MFA11S17S		200,5	177	100	
		MFA11S27Z	MFA11S27S				110	
	7M	MFA13S17Z	MFA13S17S		265	178	100	
		MFA13S27Z	MFA13S27S				110	
	2x7M	MFA14S17Z	MFA14S17S	MFA14S17D	265	265	100	
		MFA14S27Z	MFA14S27S	MFA14S27D			110	
	3x7M horizontalni / horizontal	MFA15S17Z	MFA15S17S	MFA15S17D	265	347	100	
		MFA15S27Z	MFA15S27S	MFA15S27D			110	
	4x7M horizontalni / horizontal	MFA19S17Z	MFA19S17S*	MFA19S17D*	265	516,5	100	
		MFA19S27Z	MFA19S27S*	MFA19S27D*			110	

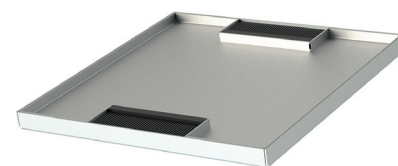
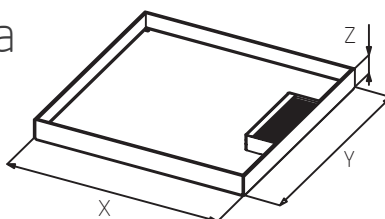
* dvostruki / double

1.4. Umetci podnih kutija Inserts



		horizontalni / horizontal	vertikalni / vertical
Umetak podne kutije Advance Insert for floor distribution box Advance	4M	MFA31HT	MFA31VT
	7M	MFA33HT	MFA33VT
	2x7M	MFA34HT	MFA34VT
	3x7M	MFA35HT	
	4x7M	2 x MFA34HT	2 x MFA34VT

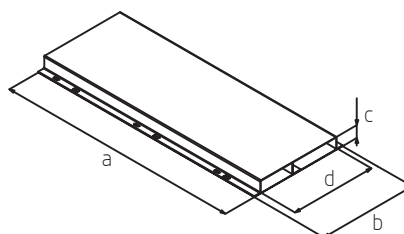
1.5. Poklopci podnih kutija Covers



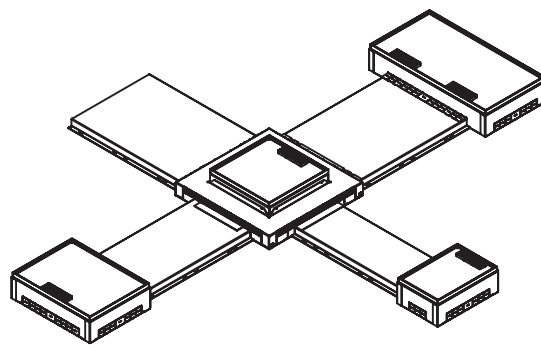
		izlaz za kabele / cable slot			X [mm]	Y [mm]	Z [mm]
		bez / without	jedan / single	dva / two			
Poklopac podne kutije Floor distribution box cover	MFA11	MFA41Z17	MFA41S17		200,5	177	17,5
		MFA41Z27	MFA41S27				27
	MFA13	MFA43Z17	MFA43S17		265	178	17,5
		MFA43Z27	MFA43S27				27
	MFA14	MFA44Z17	MFA44S17	MFA44D17	265	265	17,5
		MFA44Z27	MFA44S27	MFA44D27			27
	MFA15	MFA45Z17	MFA45S17	MFA45D17	265	347	17,5
		MFA45Z27	MFA45S27	MFA45D27			27
	MFA19	MFA49Z17	MFA49S17*	MFA49D17*	265	516,5	17,5
		MFA49Z27	MFA49S27*	MFA49D27*			27

* dvostruki / double

1.6. Podni kanali Floor channels

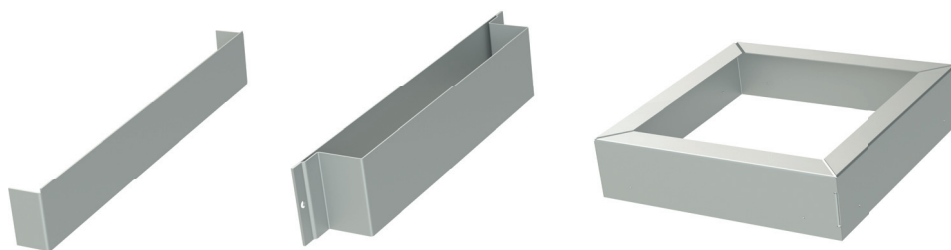


		a [mm]	b [mm]	c [mm]	d [mm]
Podni kanal dvokomorni Two chambers floor channel	MFS2K193	2000	220	28	190
	MFS2K253		280		250
	MFS2K194		220	38	190
	MFS2K254		280		250
Podni kanal trokomorni Three chambers floor channel	MFS3K253	2000	280	28	250
	MFS3K353		380		350
	MFS3K254		280	38	250
	MFS3K354		380		350



	MFA11	MFA13	MFA14	MFA15	MFA19	MFA20
MFS2K193		2x	2x	4x	4x	4x
MFS2K253				2x	2x	4x
MFS2K194						4x
MFS2K254						4x
MFS3K253				2x	2x	4x
MFS3K353					2x	4x
MFS3K254						4x
MFS3K354						4x

1.7. Pribor Accessories



Set za uzemljenje <i>Grounding set</i>	MFSG200	1,5 mm ² L = 200 mm
Vezni element podnih kanala <i>Joining piece for floor channel</i>	MFSV194	190×38
	MFSV254	250×38
	MFSV354	350×38
	MFSV193	190×28
	MFSV253	250×28
	MFSV353	350×28
Završni element podnog kanala <i>End piece of floor channel</i>	MFSE194	190×38
	MFSE254	250×38
	MFSE354	350×38
	MFSE193	190×28
	MFSE253	250×28
	MFSE353	350×28
Zaštita od betona visine 60 mm/ <i>Concrete protection 60 mm</i>	MFSP200	
Zaštita od betona visine 150 mm/ <i>Concrete protection 150 mm</i>	MFSP201	



TEM Mandeks d.o.o.
 Varaždinska 2, 88220
 Široki Brijeg, Bosna i Hercegovina
 Tel: +387 39 704 414
 Faks: +387 39 706 763
 E-mail: info@mandeks.ba
 Web: www.mandeks.ba